



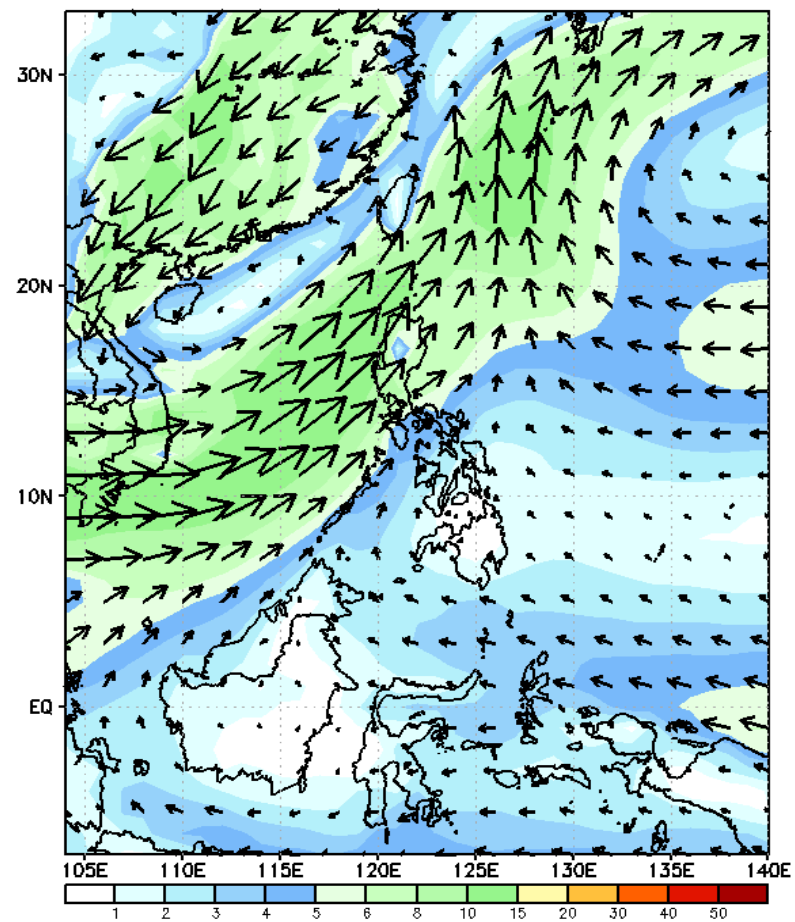
Week 1 & Week 2 Forecast for the Philippines using GEFS Model



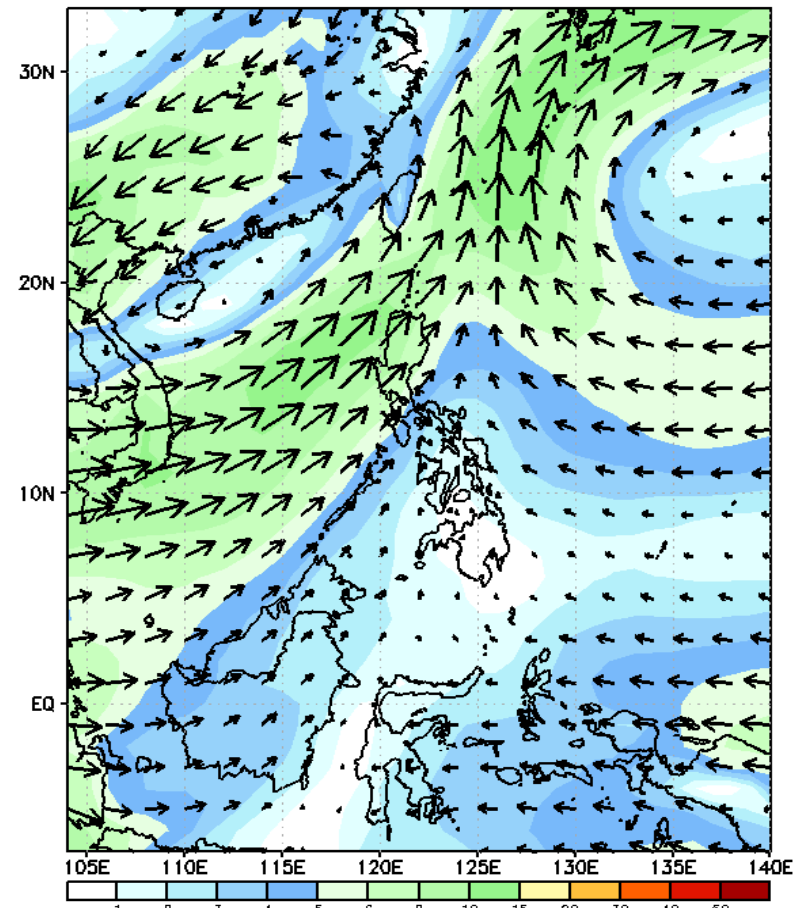
GEFS Week-1 Wind Forecasts:

Week 1: Sep 20-26, 2024

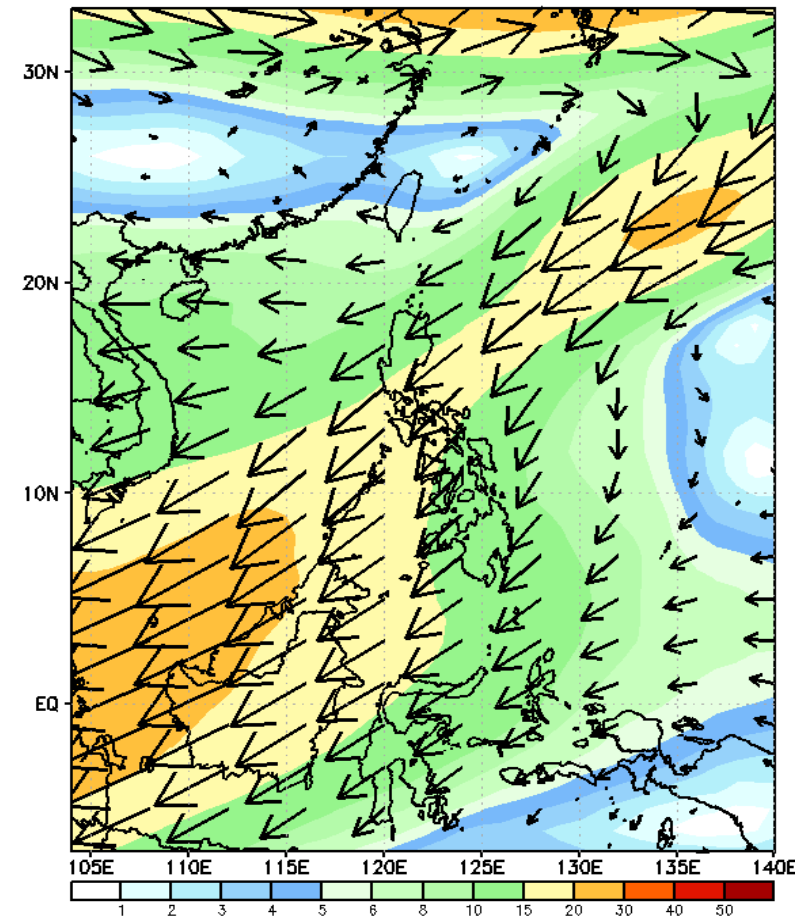
GEFS Week-1 850-hPa Wind Total
Valid: 20240920 - 20240926



GEFS Week-1 700-hPa Wind Total
Valid: 20240920 - 20240926

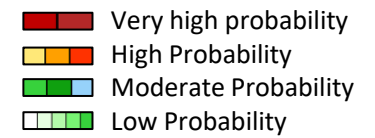


GEFS Week-1 200-hPa Wind Total
Valid: 20240920 - 20240926



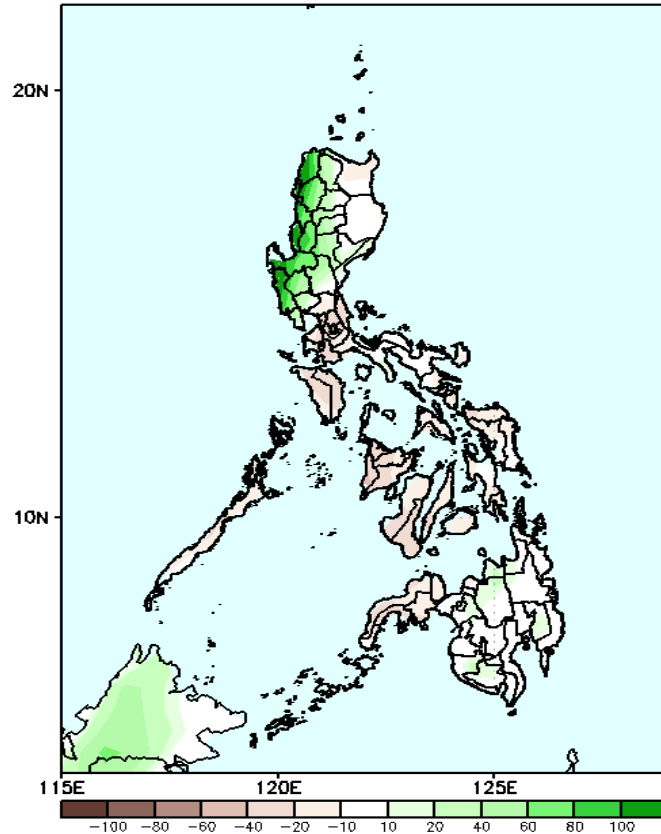
Southwest Monsoon affecting the western section of Luzon. Easterlies affecting most parts of the country.

Precipitation Anomaly and Exceedance Probability > 25/50 mm



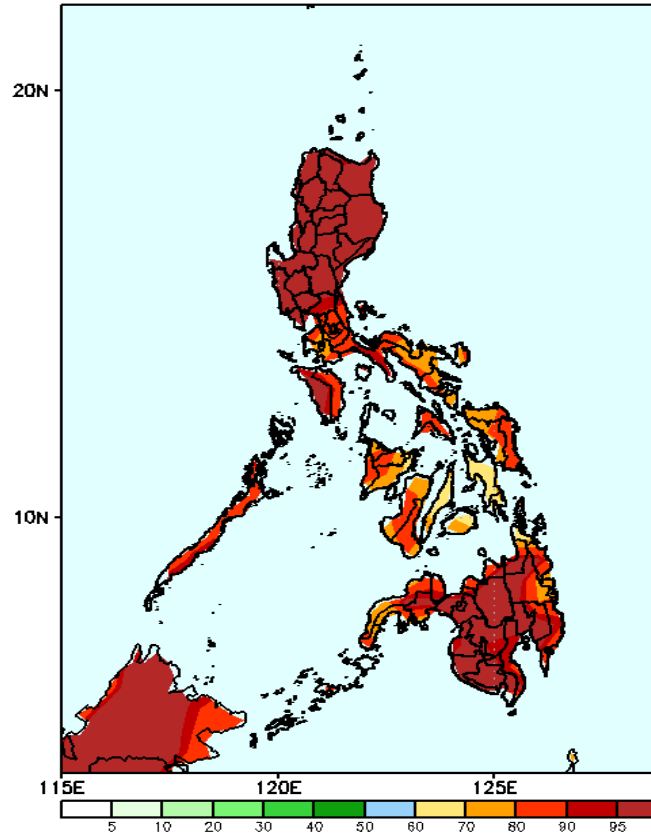
Week 1: Sep 20-26, 2024

GEFS Week-1 Precip Anomaly
Valid: 20240920 - 20240926



Increase of rainfall of 40-100mm is likely in most parts of Ilocos Region, CAR and Central Luzon while rainfall deficit of 10-40mm is forecasted over the rest of the country.

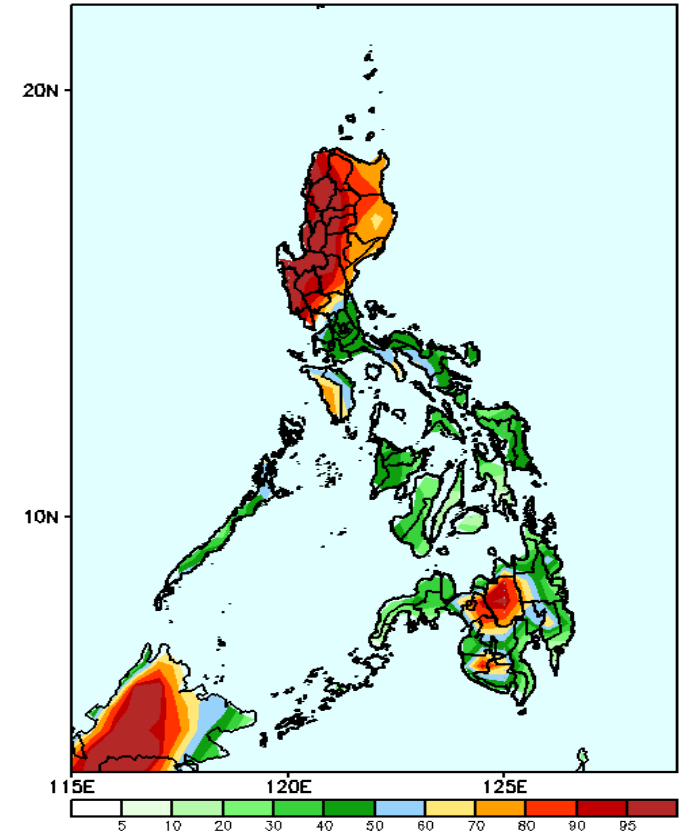
GEFS Week-1 Exceedance Prob. > 25mm
Valid: 20240920 - 20240926



Probability to Exceed 25mm

- High to very high over most parts of the country;

GEFS Week-1 Exceedance Prob. > 50mm
Valid: 20240920 - 20240926

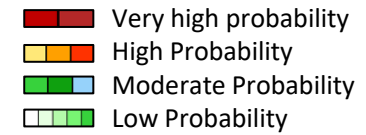


Probability to Exceed 50mm

- High to very high over Northern and Central Luzon;
- Moderate to high over the rest of Luzon and central areas of Mindanao;
- Low to moderate over Visayas and the rest of Mindanao.

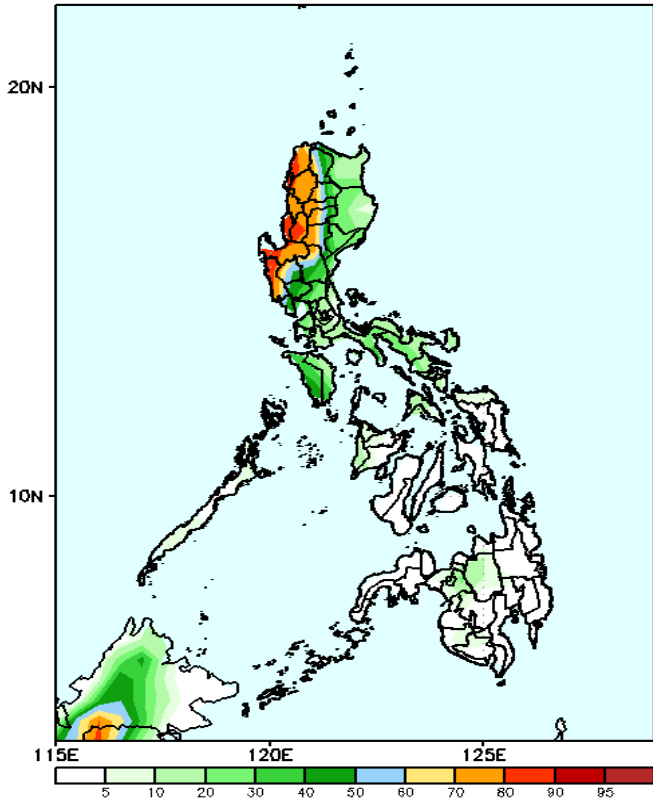


Exceedance Probability > 100/150/200 mm



Week 1: Sep 20-26, 2024

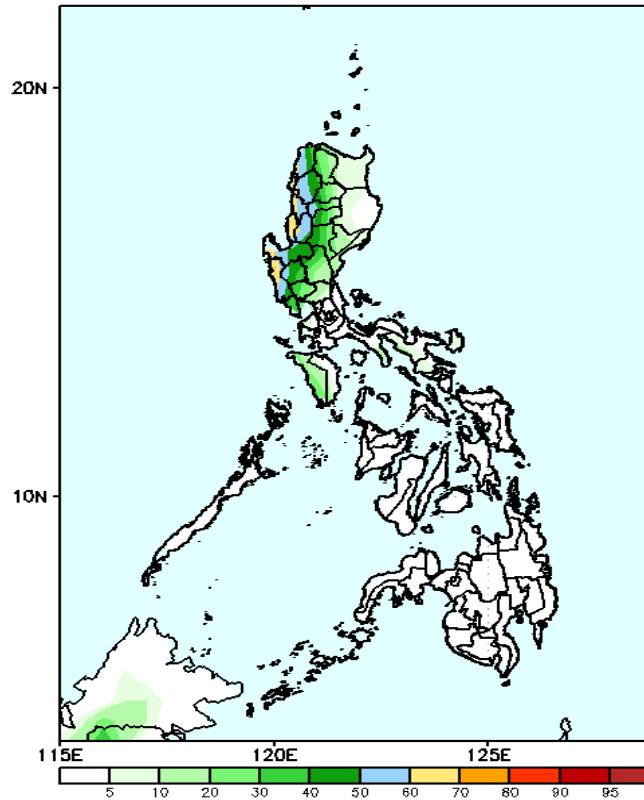
GEFS Week-1 Exceedance Prob. > 100mm
Valid: 20240920 - 20240926



Probability to Exceed 100mm

- Moderate to high over Ilocos Region, CAR, and the western part of Central Luzon;
- Low to moderate over the rest of Luzon;
- Low over Visayas and Mindanao.

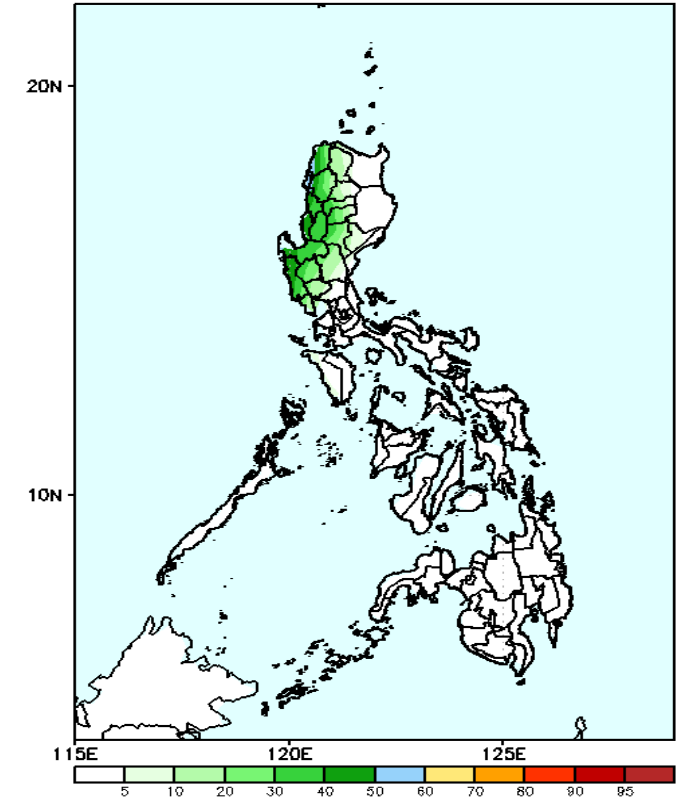
GEFS Week-1 Exceedance Prob. > 150mm
Valid: 20240920 - 20240926



Probability to Exceed 150mm

- Moderate to high Ilocos Region, Abra, Benguet, Zambales and Tarlac;
- Low to moderate over the rest of Luzon;
- Low over Visayas and Mindanao.

GEFS Week-1 Exceedance Prob. > 200mm
Valid: 20240920 - 20240926



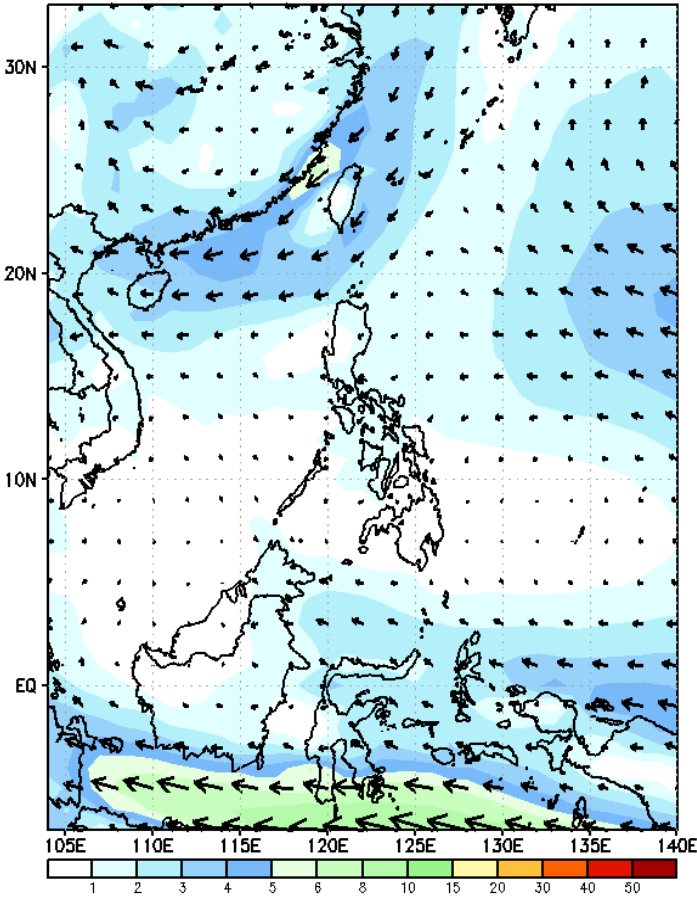
Probability to Exceed 200mm

- Low to moderate over the western parts of Northern and Central Luzon;
- Low over the rest of the country.

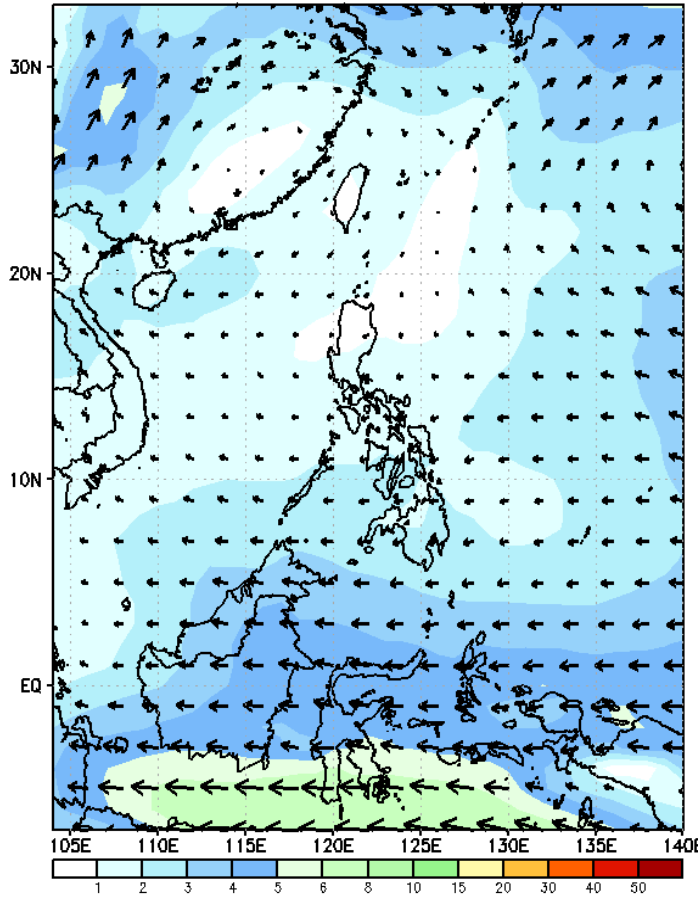
GEFS Week-2 Wind Forecasts:

Week 2: Sep 27- Oct 03, 2024

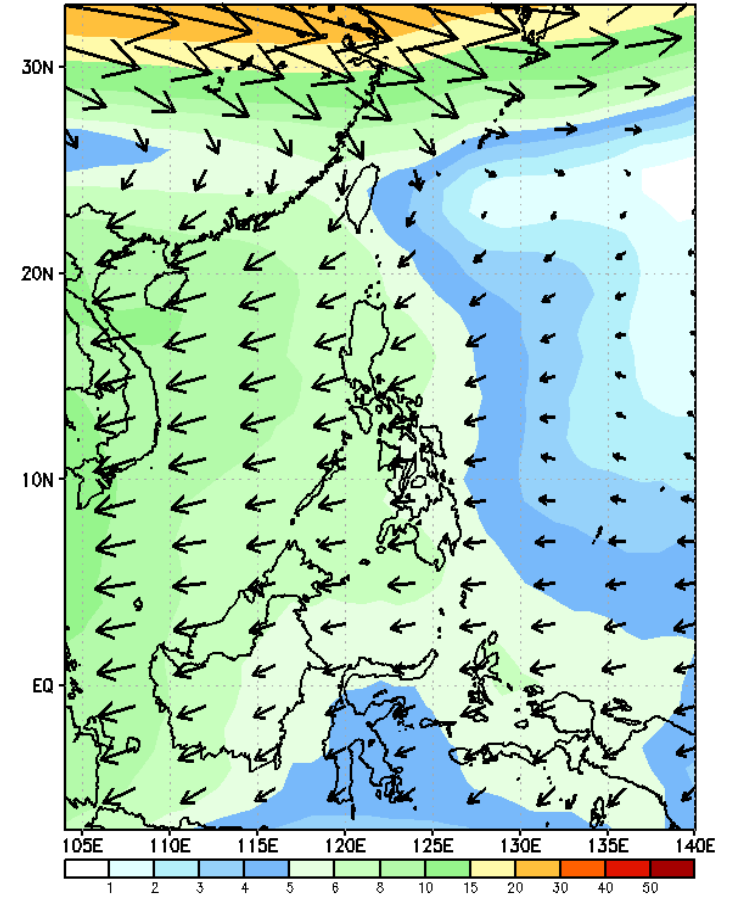
GEFS Week-2 850-hPa Wind Total
Valid: 20240927 - 20241003



GEFS Week-2 700-hPa Wind Total
Valid: 20240927 - 20241003

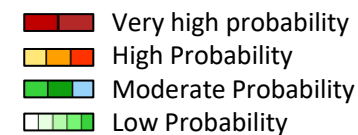


GEFS Week-2 200-hPa Wind Total
Valid: 20240927 - 20241003



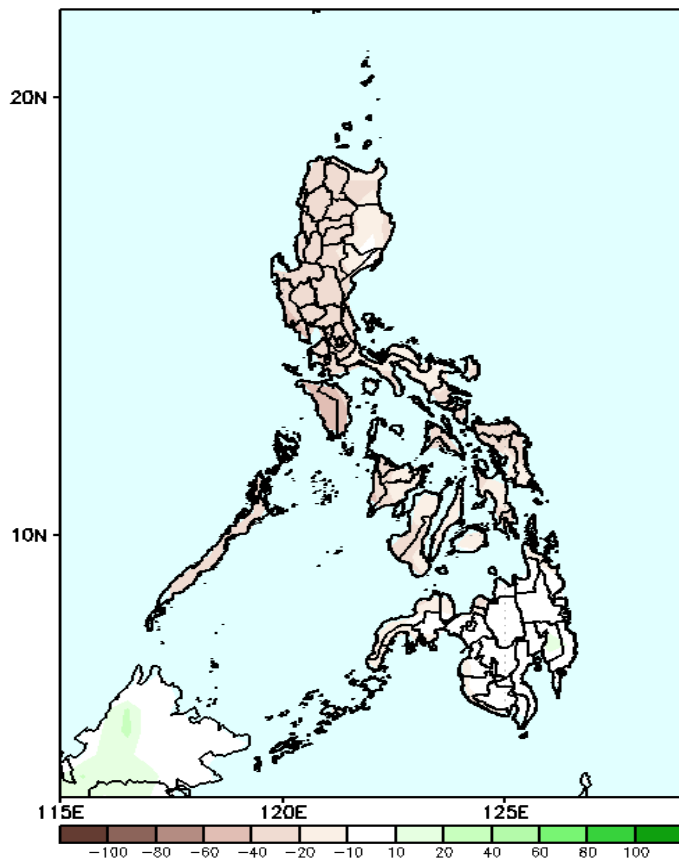
Easterlies affecting most parts of the country.

Precipitation Anomaly and Exceedance Probability > 25/50 mm



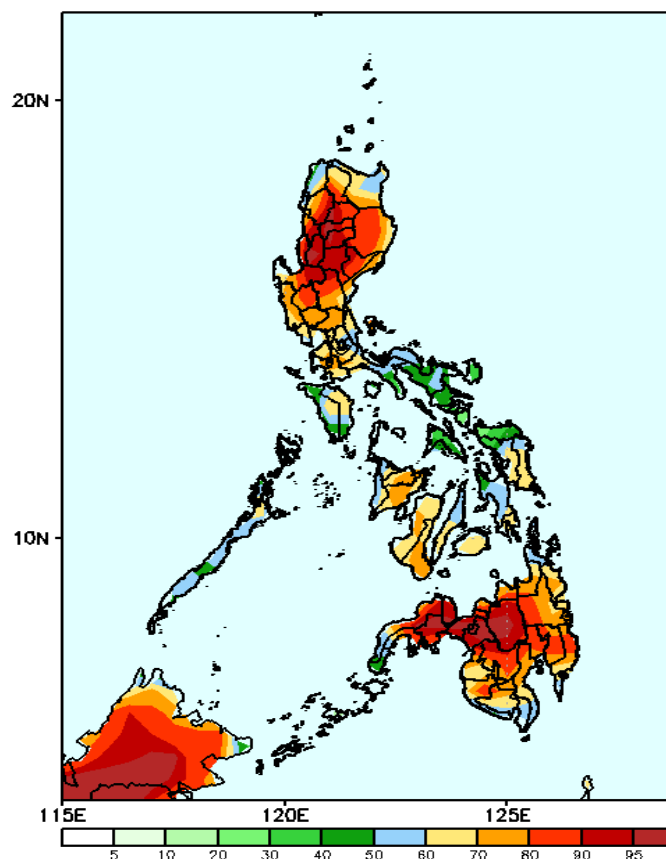
Week 2: Sep 27- Oct 03, 2024

GEFS Week-2 Precip Anomaly
Valid: 20240927 - 20241003



Rainfall deficit of -20-60mm is likely over most parts of the country.

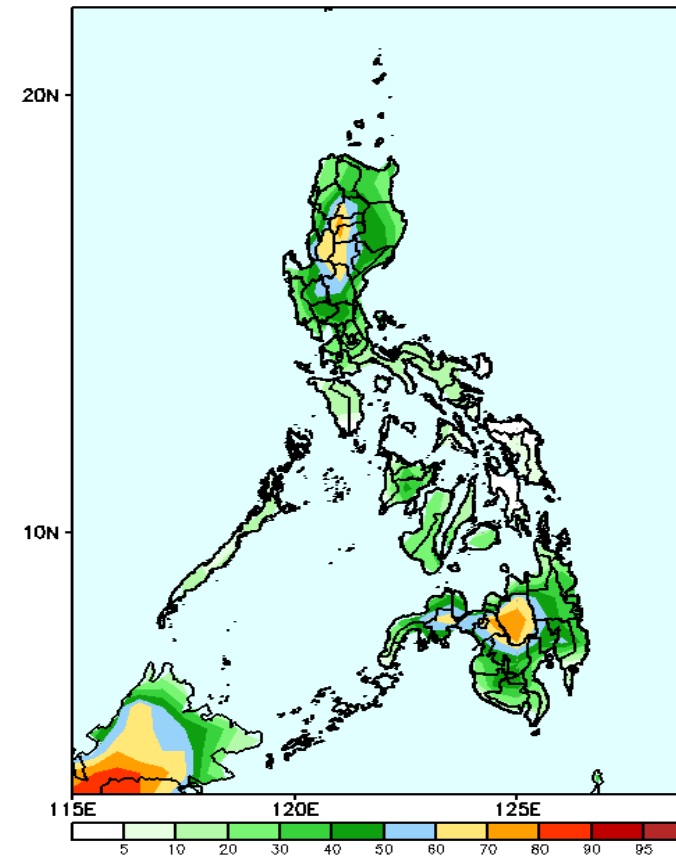
GEFS Week-2 Exceedance Prob. > 25mm
Valid: 20240927 - 20241003



Probability to Exceed 25mm

- High to very high most parts of Northern and Central Luzon and Mindanao;
- Moderate to high over the rest of the country.

GEFS Week-2 Exceedance Prob. > 50mm
Valid: 20240927 - 20241003



Probability to Exceed 50mm

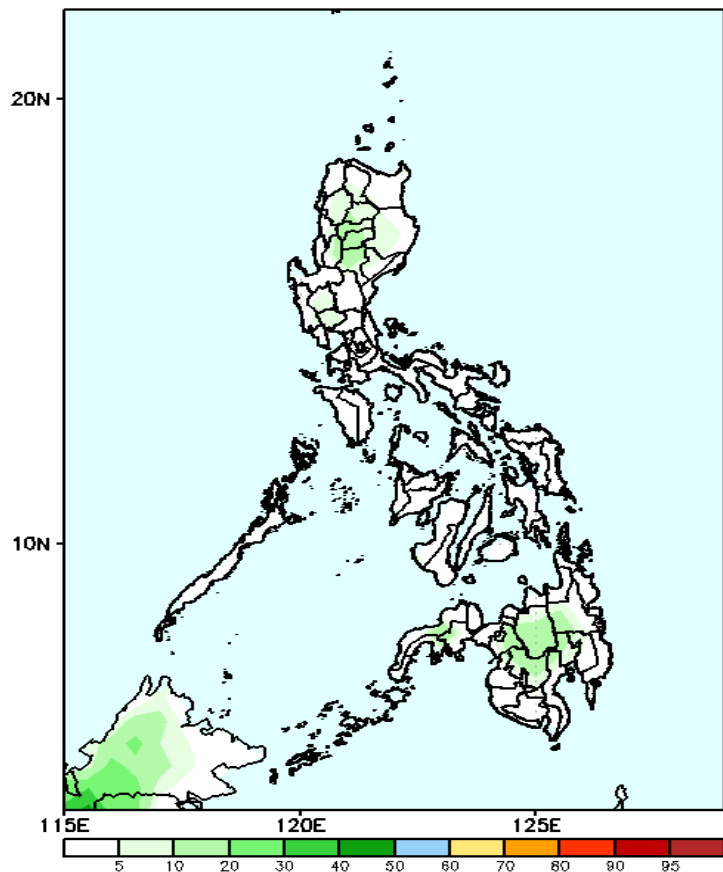
- Moderate to high over Pangasinan, most of CAR, Nueva Vizcaya, Nueva Ecija, Bukidnon, Lanao Provinces, Cotabato, and Zamboanga del Sur;
- Low to moderate over the rest of Luzon and Mindanao;
- Low over the Visayas.

Exceedance Probability > 100/150/200 mm

- Very high probability
- High Probability
- Moderate Probability
- Low Probability

Week 2: Sep 27- Oct 03, 2024

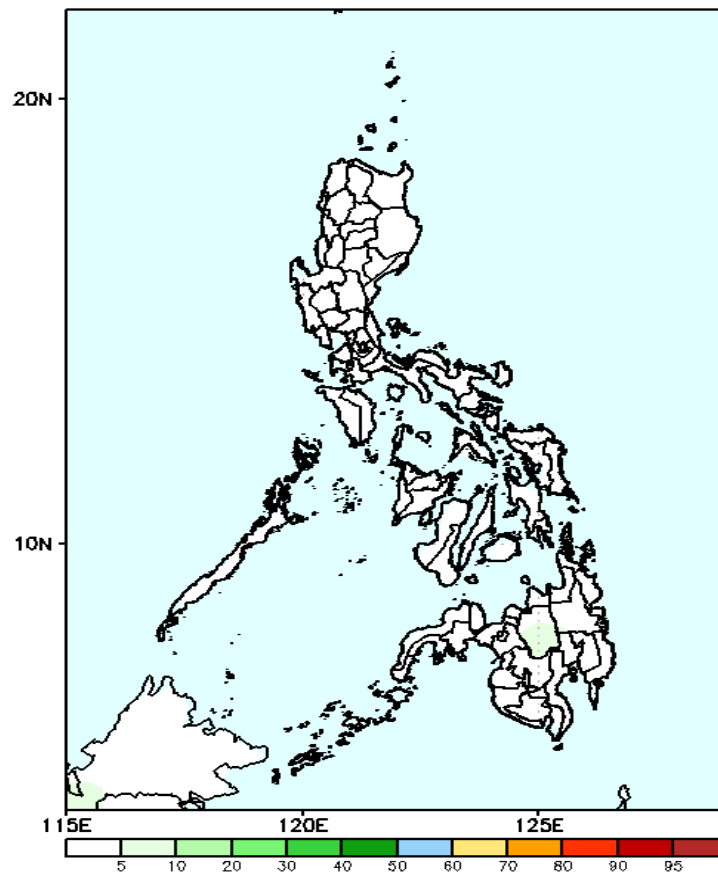
GEFS Week-2 Exceedance Prob. > 100mm
Valid: 20240927 - 20241003



Probability to Exceed 100mm

- Low across the country.

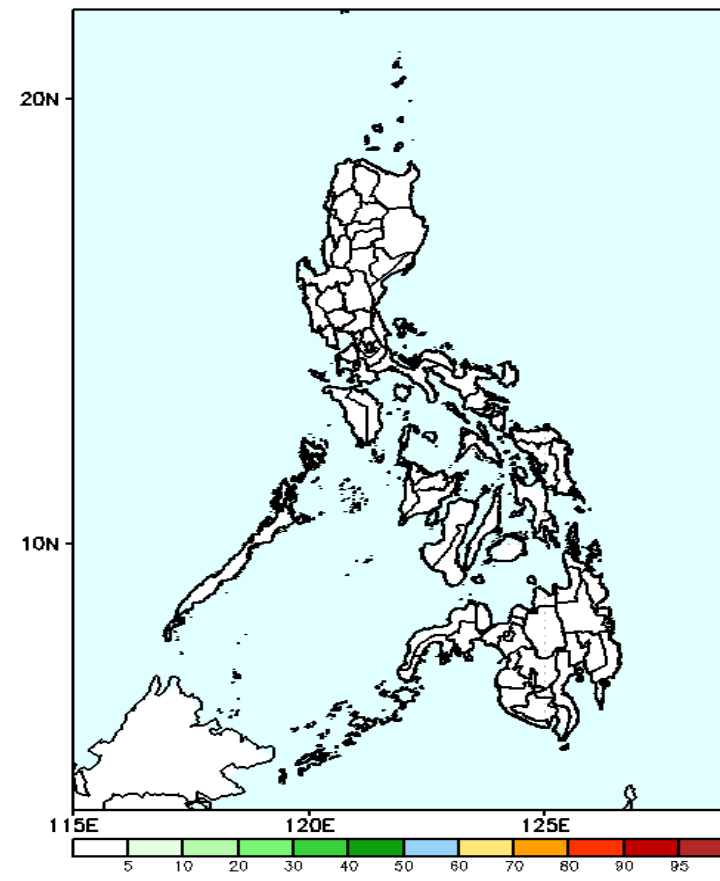
GEFS Week-2 Exceedance Prob. > 150mm
Valid: 20240927 - 20241003



Probability to Exceed 150mm

- Low across the country.

GEFS Week-2 Exceedance Prob. > 200mm
Valid: 20240927 - 20241003

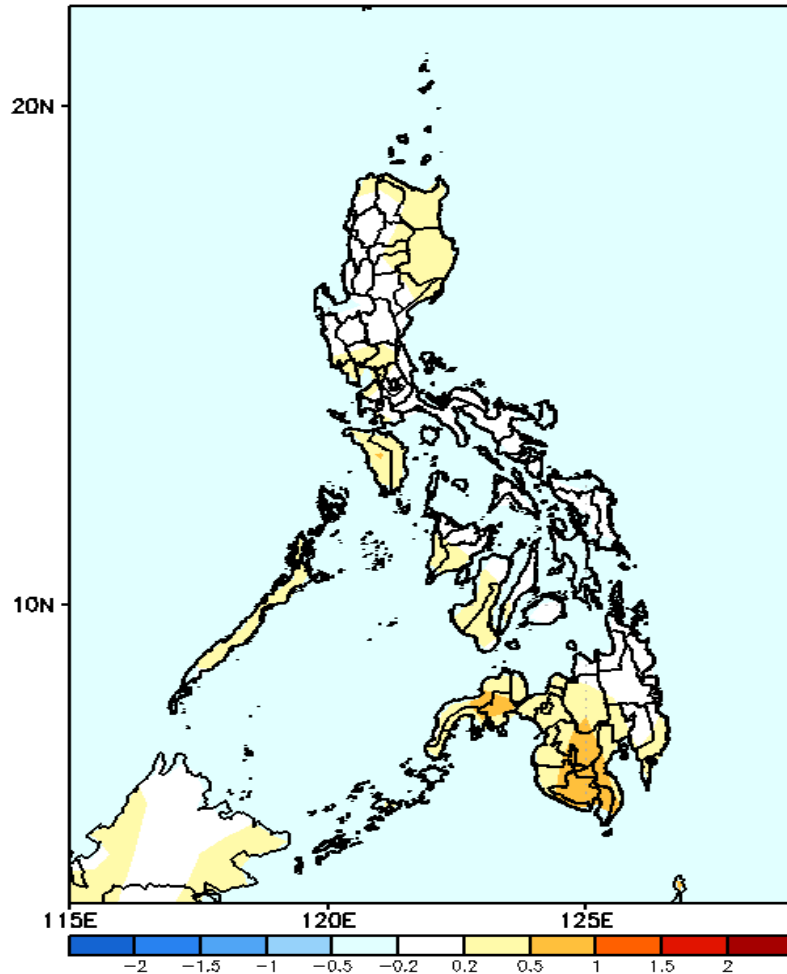


Probability to Exceed 200mm

- Low across the country.

GEFS Week-1 & 2 Forecasts: T2m Anomaly

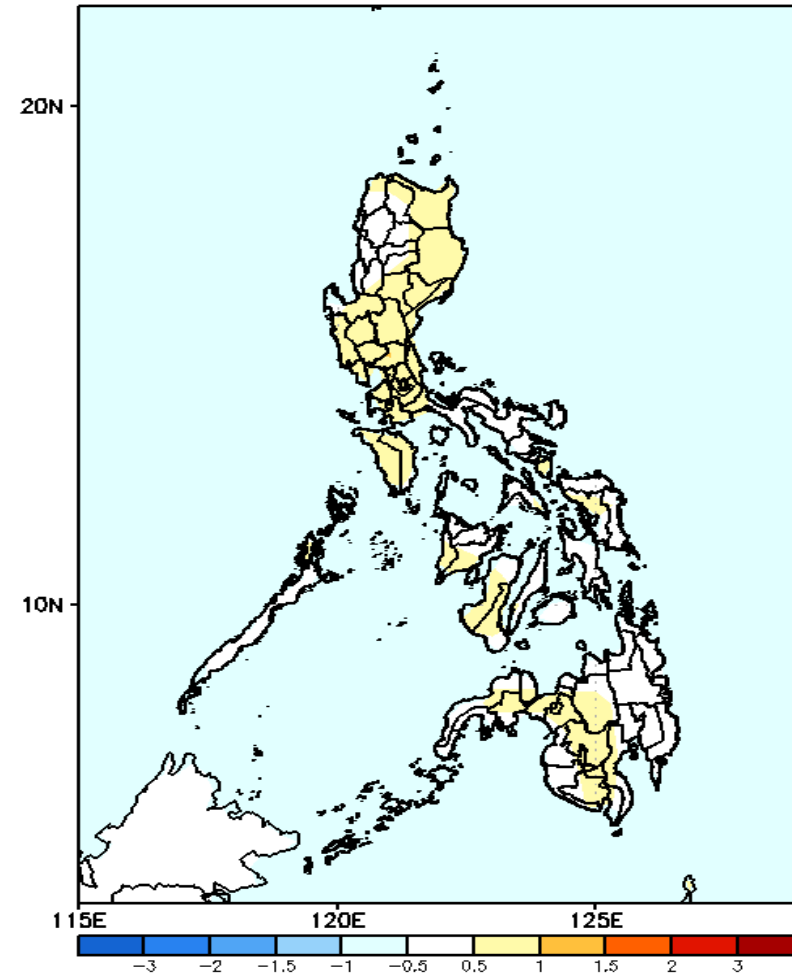
GEFS Week-1 T2m Anomaly
Valid: 20240920 - 20240926



2m Temperature Week 1: Sep 20-26, 2024

Near to slightly warmer average surface air temperature will likely be experienced in most parts of the country.

GEFS Week-2 T2m Anomaly
Valid: 20240927 - 20241003



2m Temperature Week 2: Sep 27- Oct 03, 2024

Near to slightly warmer average surface air temperature will likely be experienced in most parts of the country.

